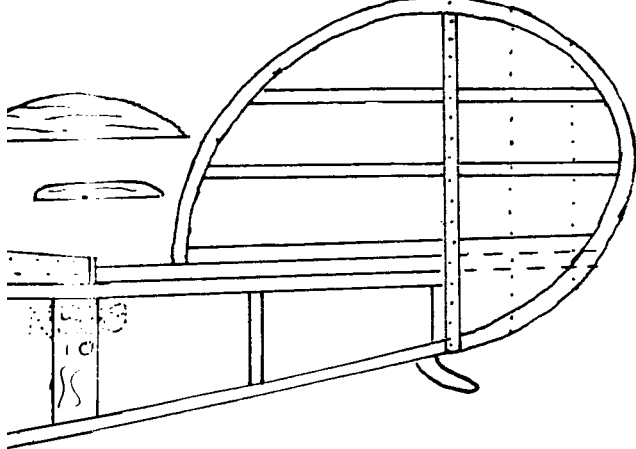
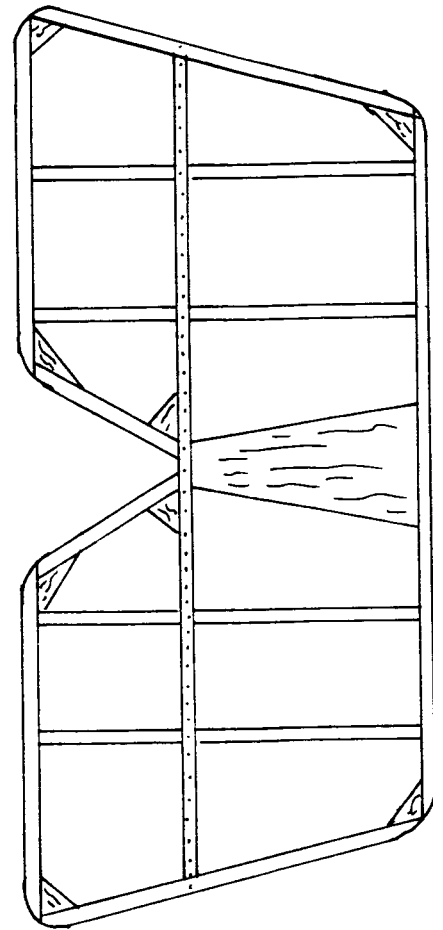
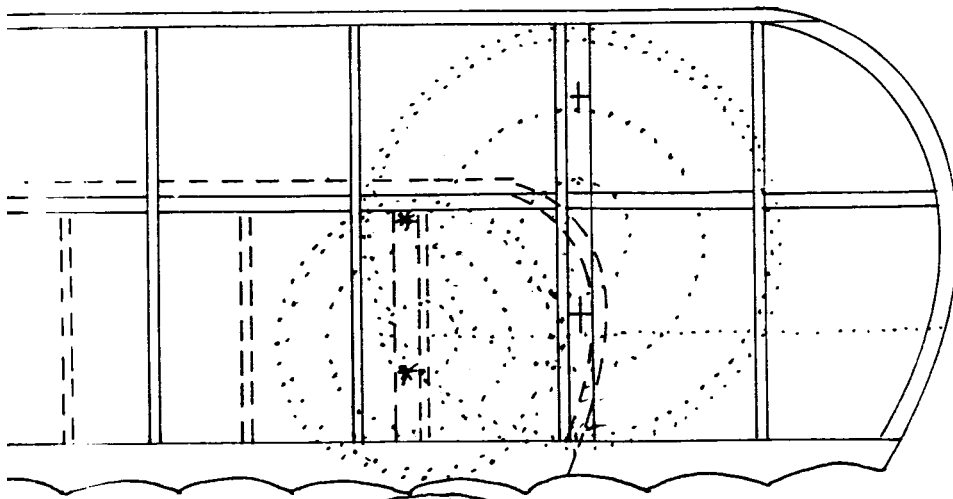


WING: (Upper) 1/16 sq. L.E., 1/16x3/16 T.E. (scalloped), approx. 1/20x1/16 spar, 1/20 sheet ribs sliced "Mooney" style, tips are three laminations 1/32x1/20; (Lower) 1/16 sq. L.E., 1/16x3/16 T.E. (scalloped), 1/20 light sheet ribs, tips are three laminations 1/32x1/20. Interplane struts: 1/20x1/8 firm. Dihedral: upper wing 1/2 in. each tip, lower wing 3/8 in. each tip. Incidences as drawn: upper wing +2°, lower wing +1.5°. Airfoil: 12% simplex.

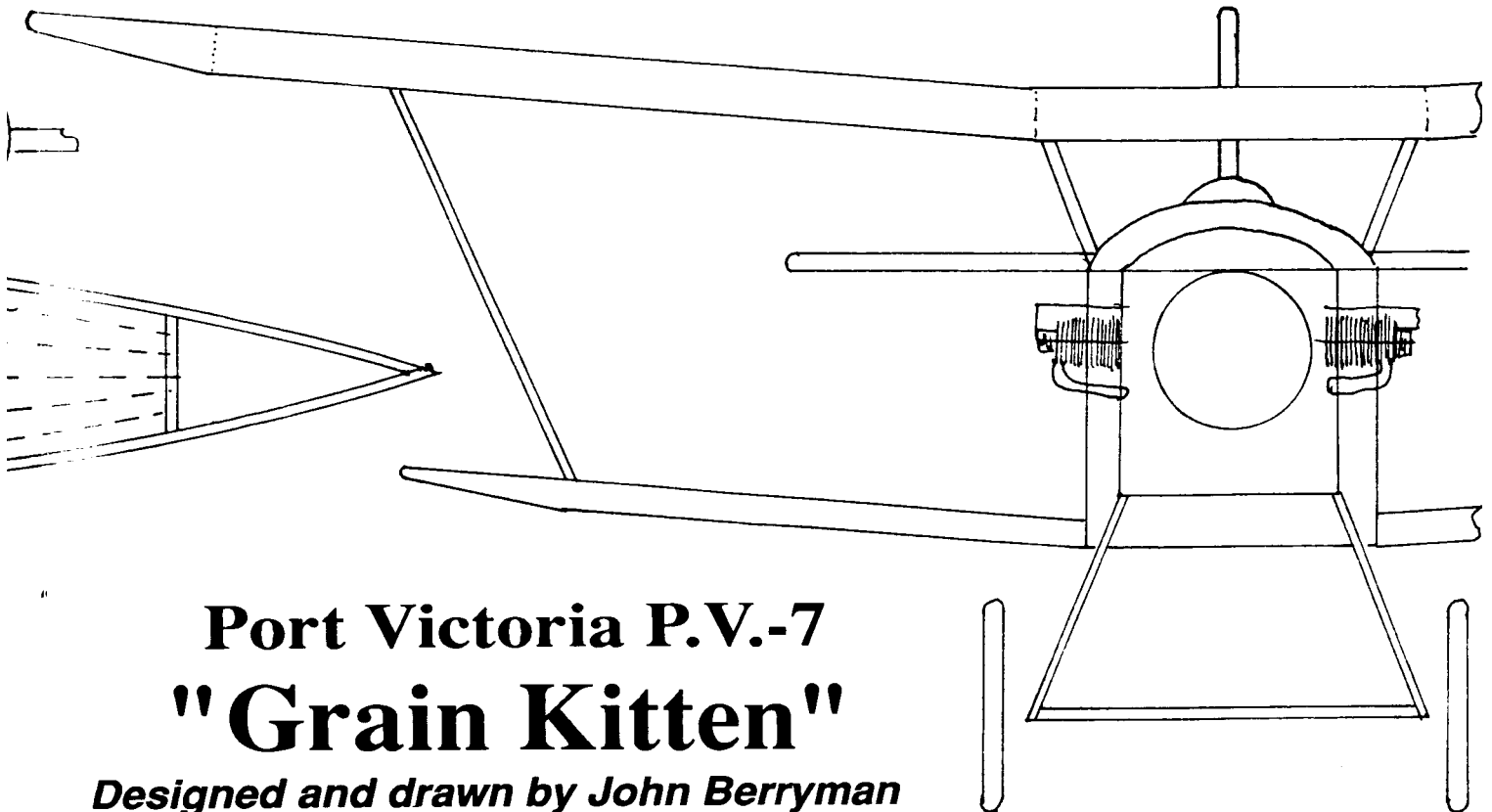
RUDDER/STAB: Light 1/20 sq. structure, curved outlines are three laminations 1/32x1/20. Incidence drawn: -1.5°.

FUSELAGE: 1/20 sq. structure, sheeted portions are light 1/32, bulkheads 1-5 are 1/20 sheet, 6-7 are 1/32 sheet. Soft balsa spinner and noseblock. L.G. legs: firm 1/20x1/8. Cabane struts: .015 music wire covered with firm 1/20x1/8. Wheels: three laminations 1/32 sheet, bush with 1/16 dowel. Stringers: 1/32x1/20. Thrust settings as drawn: 2° down, 2° right.

PROP: 1/64 ply blades, soaked and taped to 12-oz. beverage can at 22° angle (angle leans left, L.E. of blade to left, hub end of blade to can bottom); blades are glued to hub at 30° angle 2 in. from center. Hub: 1/8 dowel. Diameter: 5 in. Pitch: 7.5 in. nominal.



COLOR SCHEME: Peck's Superlight green tissue overall. Spinner, noseblock, cowl aft to first cabane strut, interplane and cabane struts, L.G. struts and wheel discs: silver/gray. Rudder stripes (front to rear): red, white, blue. National insignia: white thin outermost circle, then blue circle, white circle, red center.



Port Victoria P.V.-7 "Grain Kitten"

Designed and drawn by John Berryman

References: *Warplanes of the First World War: Fighters (Volume 1)*, by J.M. Bruce, Doubleday & Co., pages 180-182.