

SHEET WING SEAT ON FUSELAGE WITH 1/32" Balsa sheet - grain across fuselage

FACE D & D1 (1/8" SHT.) WITH 1/64" PLY USE TWO BAMBOO PEGS OR 1/32" PLY 1 TO LOCATE WING.

PLANK FUS. TURTLEDECK A1 - E1 WITH SOFT 1/16" AND SAND DOWN.

BALANCE POINT ON SPAR MAKE 'FULL' RIBS FOR WING ROOTS & GULL

4off

CARVE & HOLLOW FROM BLOCK Balsa OR MOULD FROM PAPER

COCKPIT COAMING FROM SPLIT TUBING

RADIATOR BATH PATTERN

CS1 & 2

C1

D1

E1

KP 01 COVER A - E IN 3/32" SHT. SAND TO SHAPE

DOWEL FOR WING BAND WS

ACTUAL SIZE WS/3

INDOOR STRINGERS 1/32" x 1/8"

OUTDOORS D 1/16" x 1/8"

D1 SAME AS C1

1/16" PLY MOTOR MOUNT INSTALL KP 01 ON SOFT FUEL TUBE COLLARS TO PERMIT SIDE & DOWNTHRUST ADJUSTMENT.

PLANK TO C2 WITH SOFT 1/16" SHT. SAND DOWN

RADIATOR BATH FROM STIFF NOTE PAPER OR 1/64" SHT. Balsa

STREAMLINE WHEELS

C2

C.S. 1 & 2

4 1/2"

5 13/16" U/C.3

ACTUAL LENGTH OF U/C LEGS

1/16" Ø BAMBOO - BIND TO FUEL MOUNT

PLANK NOSE TOP TO E1 AFTER CENTRE SECTION IS TACK GLUED IN PLACE WITH FORMERS FITTED, THEN SEPARATE

10 5/8"

3 5/8"

WS1,2, & 3 ACTUAL LENGTH 2off EACH

10 19/32"

WS1 - HARD Balsa/THIN BAMBOO 1/4" x 1/32"

WS2

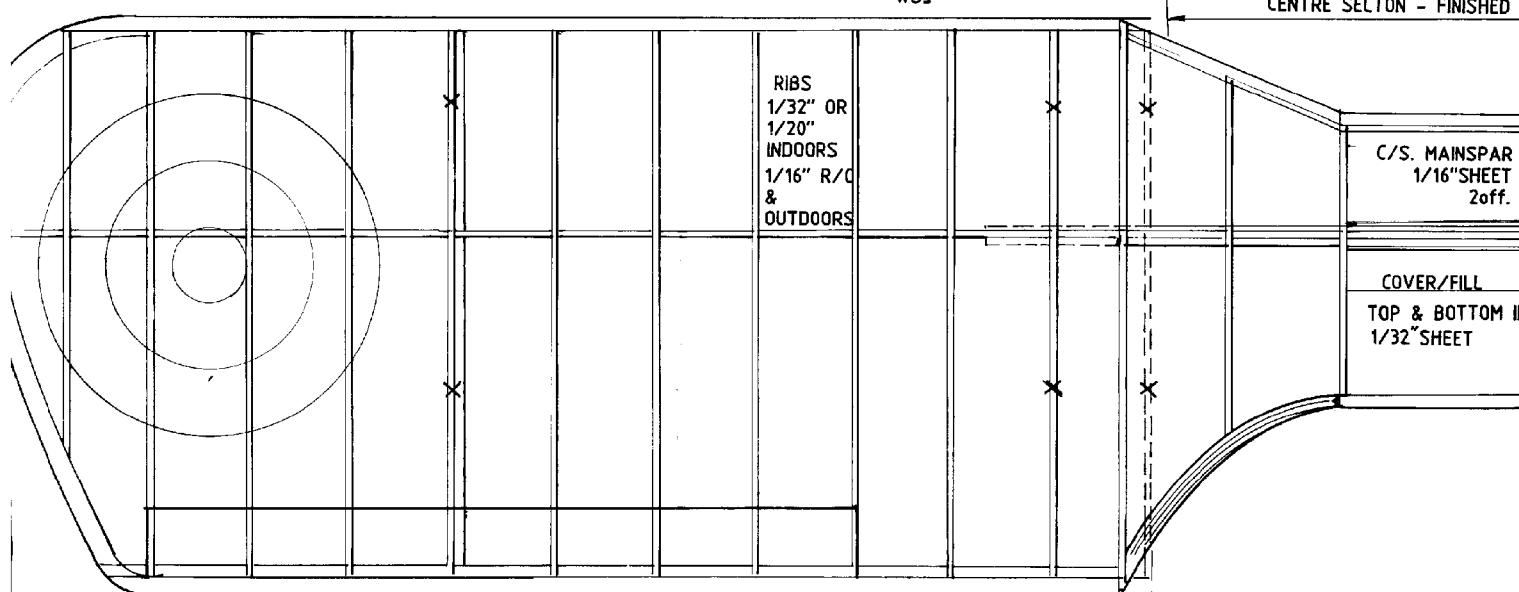
WS3

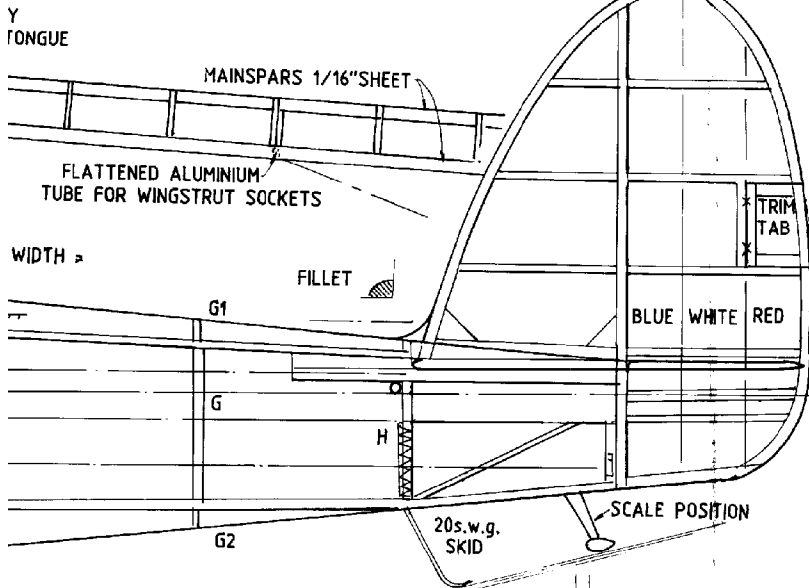
CENTRE SECTION - FINISHED

RIBS 1/32" OR 1/20" INDOORS 1/16" R/C & OUTDOORS

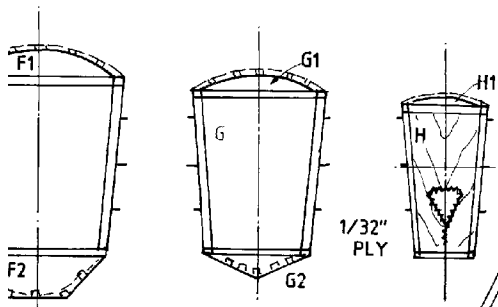
C/S. MAINSPAR 1/16" SHEET 2off.

COVER/FILL TOP & BOTTOM 1/32" SHEET

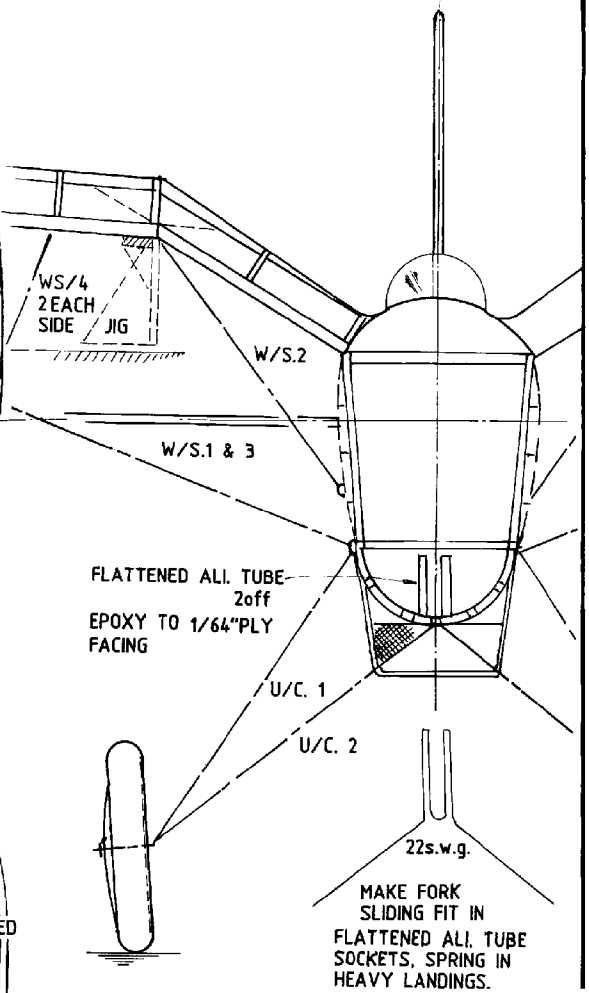
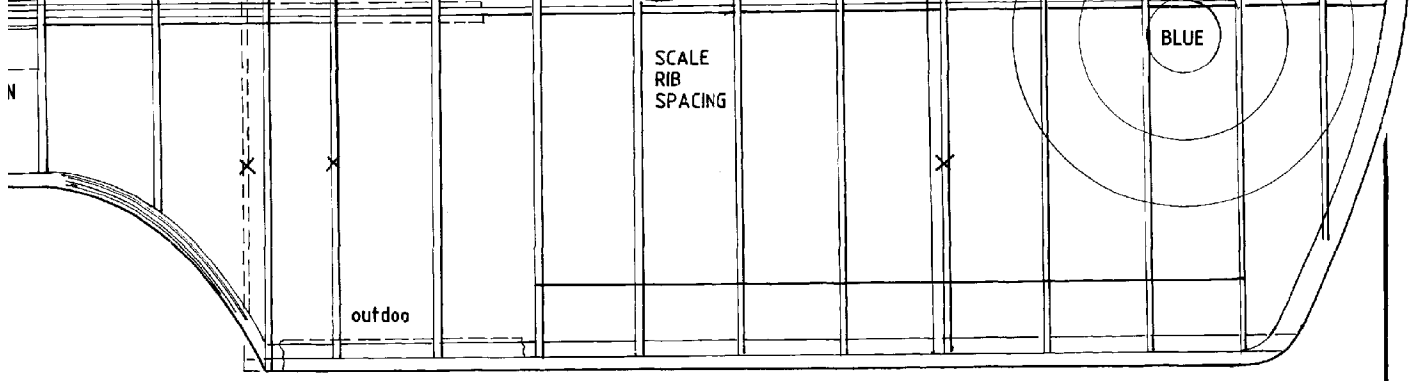
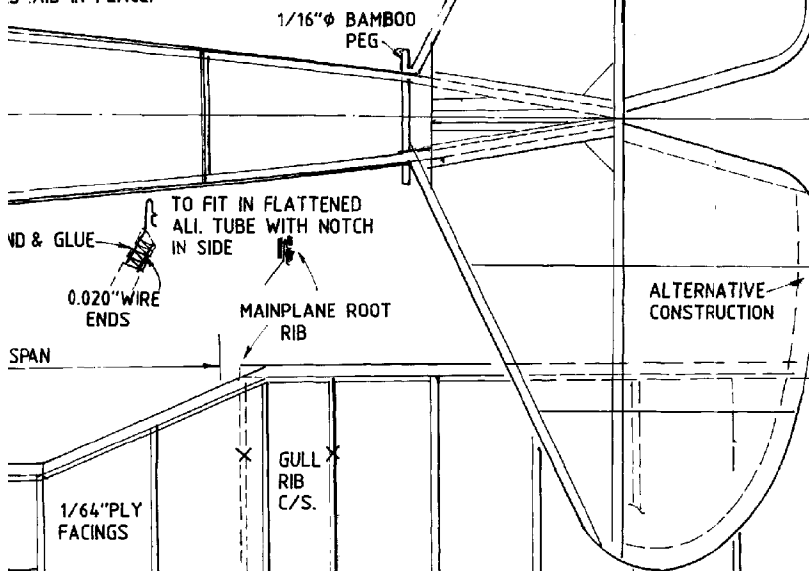




target weight 112 g. A.U.W.



FORMERS A & G THEN NOTCH REMAINING
 REMOVE, MARKING FROM
 S. AID IN PLACE.



PIN HOOK EACH SIDE FOR T/P. ATTACH.

FIN & TAILPLANE OUTLINE LAMINATED FROM 1/32"x1/8" STRIPS

GORDOU-LESEURRE 482

An electric powered free flight sport-scale model for KP 01 power

Designed by
ERIC MARSDEN